

**PHILIPS**

Ultrasound

3300



Adaptable, affordable  
with advanced capabilities

## Philips Ultrasound System 3300 General Imaging

The Philips Ultrasound System 3300 General Imaging is a versatile, reliable ultrasound system that combines great image quality with exceptional workflow efficiency. Advanced features and functionality help guide your clinical decision-making, while the system's ergonomic design and day-to-day efficiency aid you in maintaining high patient throughput. It supports you in delivering high-quality care when and where your patients need it, without putting strain on your budget or resources.

# Easy to use

This ultrasound system is ergonomically designed to help make your daily workflow efficient.

## A range of clinical applications

- Abdominal
- Obstetrics
- Gynecology
- Cardiology
- Vascular
- Pediatric
- Small parts
- Musculoskeletal (MSK)
- Transcranial
- Compatible with biopsy guides
- Contrast imaging

54.6 cm (21.5 in) monitor articulates for easy viewing and folds down for transport

Gel warmer with temperature control

Pullout keyboard for ease of use

ECG plug

Four-way swivel wheels

25.7 cm (10.1 in) tablet-like touchscreen supports easy navigation for commonly used controls, reducing button pushes

Elegant control panel, simplified for your day-to-day workflow

CD/DVD drive

Four transducer ports and one-handed transducer access



## Flexibility across multiple settings

The Philips Ultrasound System 3300 supports a wide range of Philips broadband transducers catering to a variety of clinical environments, type of scans and supports both adult and pediatric care.

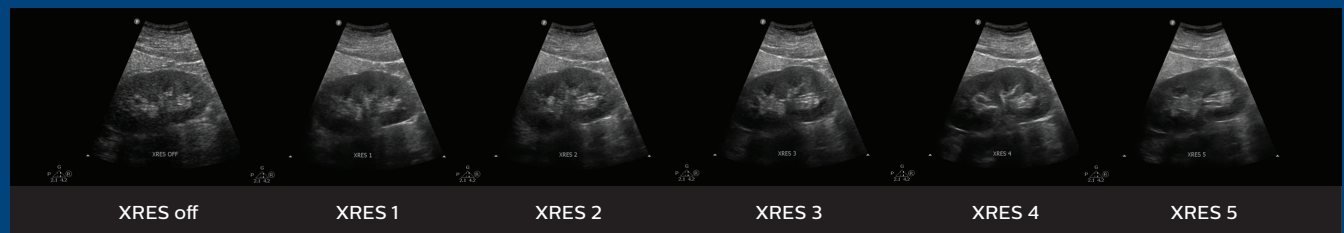


# Take control of your imaging

High-quality imaging with high patient throughput means efficient days of scanning with informed clinical decision-making.

## XRES real-time adaptive image enhancement

Reduce speckle noise, improve tissue contrast resolution and fine resolution, boost signal-to-noise ratio, and obtain natural, smooth and accurate images, with wide application through various modes.



Five levels of control across presets to give you the ability to define the image characteristics you want.

## Automation to maintain high patient throughput

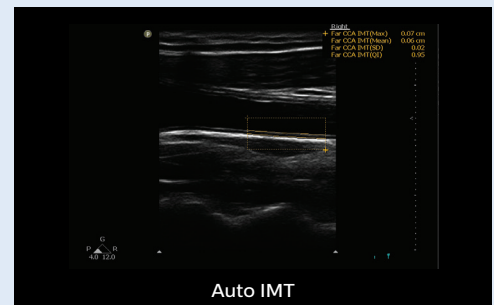
Reduce repetitive button pushes and steps, improving workflow.

- **iSCAN 2D and Doppler** for one click image optimization provides the desired results faster
- **SmartExam** guided workflow automatically plans and processes application protocols
- **Auto IMT** provides automated measurements of intima media thickness in carotids and other superficial vessels
- **Fetal biometry assist** uses anatomical intelligence to assist in measurements of the most commonly used fetal biometry measurements: biparietal diameter (BPD), occipitofrontal diameter (OFD), head circumference (HC), abdominal circumference (AC) and femur length (FL)

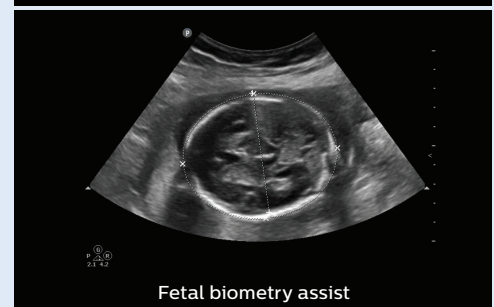
## Expanded capabilities aid clinical care

Advanced functionality helps guide clinical decision-making.

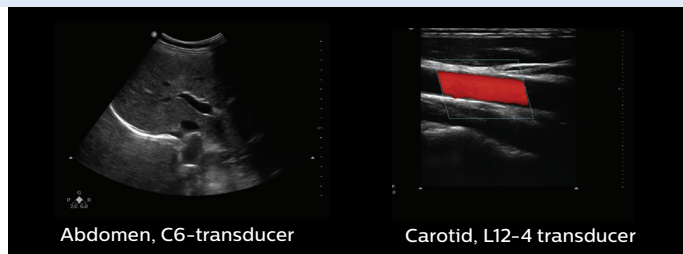
- **Needle enhancement** provides needle visibility during interventional procedures and biopsies



Auto IMT



Fetal biometry assist



Abdomen, C6-transducer

Carotid, L12-4 transducer



Philips broadband transducers are also compatible with our ultrasound Affiniti carts, providing excellent image quality while reducing overall cost of ownership.

# Service that works for you

The value of a Philips ultrasound system extends far beyond technology. With every Philips 3300 ultrasound system, you get access to our award-winning service organization, our competitive financing, and educational programs that help you get the most out of your system.

©2020 Koninklijke Philips N.V. All rights are reserved. Philips reserves the right to make changes in specifications and/or to discontinue any product at any time without notice or obligation and will not be liable for any consequences resulting from the use of this publication.



[www.philips.com](http://www.philips.com)

Printed in the Netherlands  
4522 991 62391 \* AUG 2020